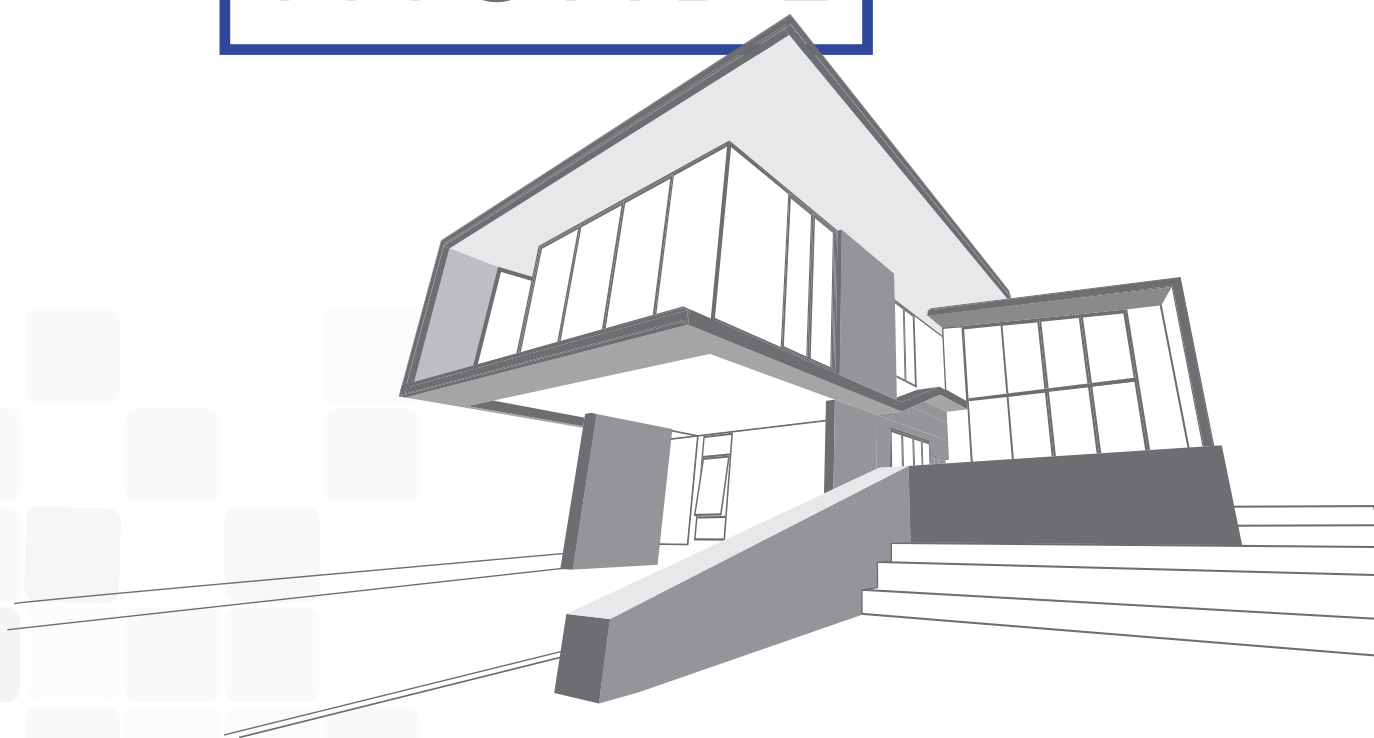
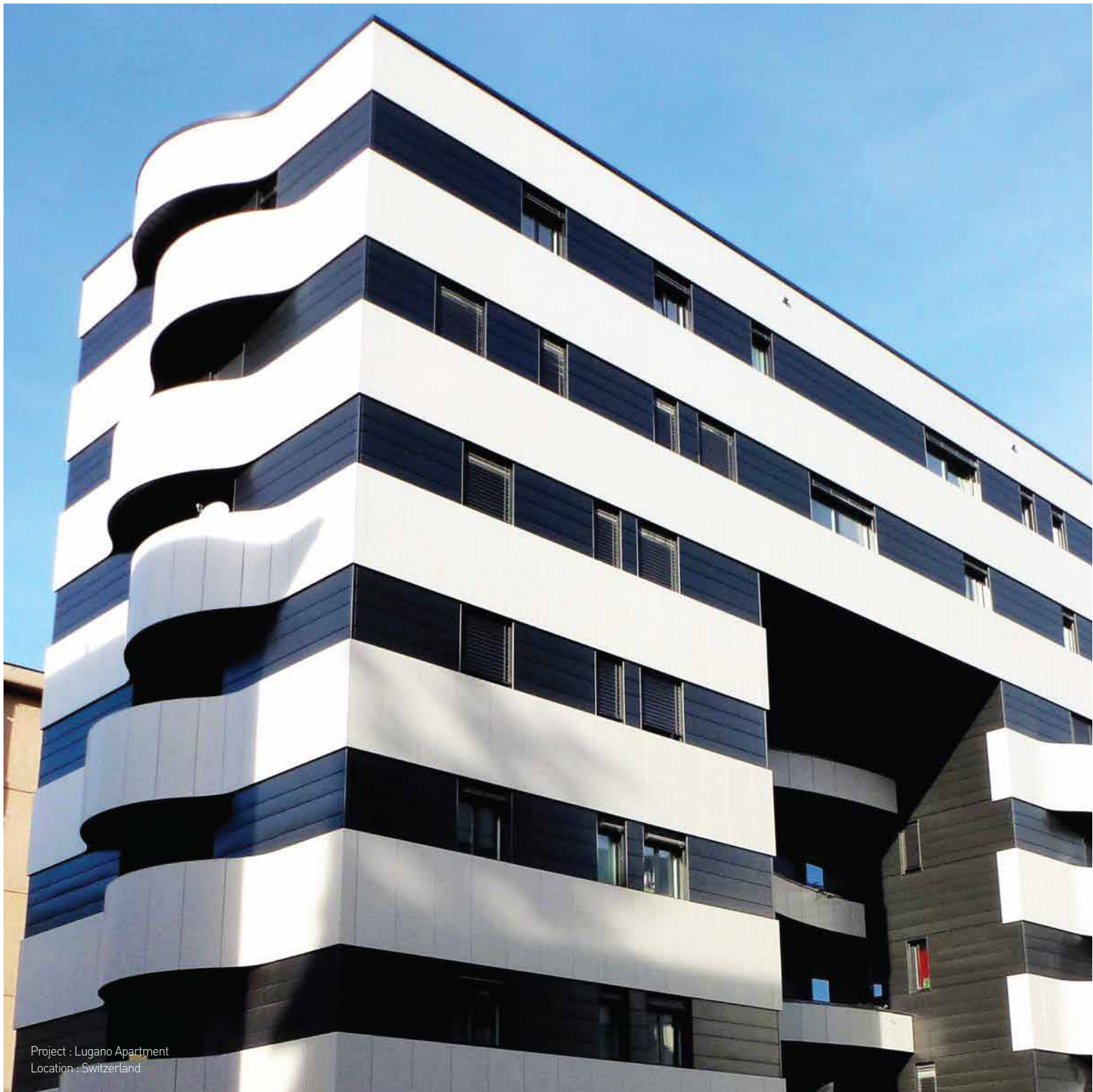


STARON EXTERIOR CLADDING — FACADE



staron[®]
Solid Surfaces



Project : Lugano Apartment
Location : Switzerland



Project : HUBLOT Shop
Location : Paris, France
Design&Photo : Dietlin Artisans Metalliers, Switzerland



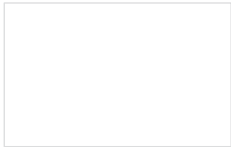
Project : KUHO Shop
Location : Jeju, Korea

STARON,

Discover the versatile beauty for exterior cladding

Project : Tectum Group
Location : Genk, Belgium

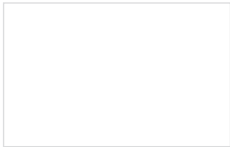
Recommended Colours for Façade & Cladding



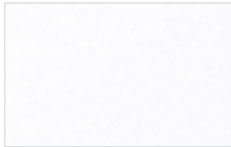
Bright White
BW010



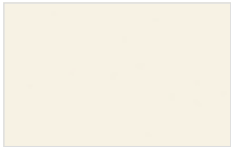
Pure white
SP016



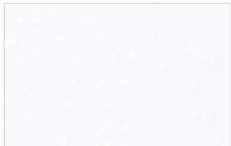
Quasar White
SQ019



Sanded Icicle
SI414



Pearl
SP011



Aspen Glacier
AG612



Aspen Snow
AS610



Sanded Sahara
SS440



Sanded White Pepper
WP410



Sanded Papyrus
SP474



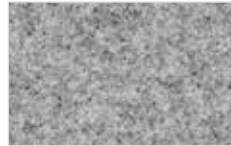
Sanded Ginger
SG431



Sanded Vermillion
SV430



Sanded Heron
SH428



Sanded Grey
SG420



Aspen Slate
AS661

◆ Available only with MOQ 50 sheets

* Printed representation of colours may vary from actual samples :
Please review actual sample prior to selection.

PHYSICAL PROPERTIES

PROPERTY	METHOD	TYPICAL RESULT
Specific gravity	DIN ISO 1183	1.74
Weight (12mm Thickness)	-	21 Kg/m ²
Flexural Modulus	EN ISO 178	9030 Mppa
Flexural Strength	EN ISO 178	64.5 Mpa
Elongation at break	EN ISO 178	0.83%
Thermal Resistance	DIN EN 12664	0.092 m ² K/W
Thermal conductivity	DIN EN 12664	0.53 W / (m K)
Coefficient of longitudinal expansion	ASTM D696 (Thermal expansion)	3.6 x 10 ⁻⁵ mm/mm°C
Colorfastness	ASTM G155 (1000 hour)	Less than ΔE=1 (Recommendation colour)
Water absorption	ASTM D570B(24hr)	0.04%
Freeze/thaw resistance	ASTM C666	No effect
Salt fog	ASTM B117	No effect
Sulfur dioxide resistance	ASTM G85	No effect
Fungus and Bacteria resistance	ASTM G21 & G22	No growth

FIRE PERFORMANCE

FIRE RESISTANCE	METHOD	RESULT
Euro class (Reaction to fire)	EN 13501-1	B-s1, d0
France	NFP 92-501	M2
Germany	DIN 4102-1	B1

DIMENSION

COLOURS	WIDTH X LENGTH X THICKNESS (mm)
15 All colours	760 x 3,680 x 12
Bright White	930 x 3,680 x 12 1,350 x 3,660 x12 1,520 x 3,660 x12

EUROPEAN TECHNICAL ASSESSMENT CERTIFIED
(ETA-16/0091 of 30 March 2017)

ETA document for Staron® Exterior cladding with Keil undercut anchor system was issued by DIBT (Deutsches Institut für Bautechnik, Technical Assessment Body certified by European Organization for technical approvals). It verifies that Staron® is suitable material for exterior cladding use in Europe.

WARRANTY

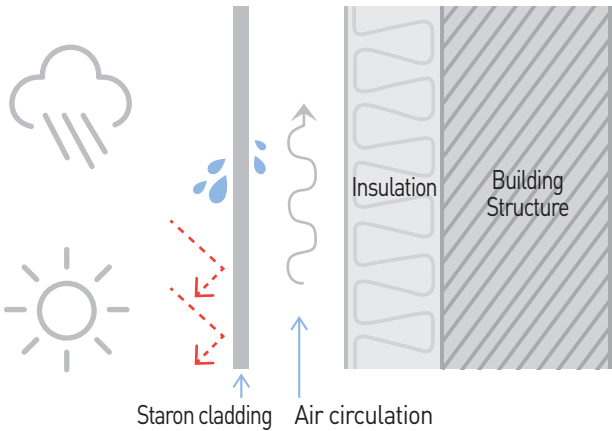
Quality of Staron® for exterior will be covered by “Limited Warranty For Staron® Exterior Cladding” written document. Recommended 17 exterior colours are warranted that the colour change will be less than 5 ΔE CIE L*a*b* unit for 10 years after installation. In addition, these colours are warranted that it will not have peeling or swelling for 20 years after installation.

INSTALLATION

Ventilated façade cladding system and undercut anchor is proper fixing method for Staron® panel of 12mm thickness.

- Advantages of ventilated façade

- Discharges the rainwater flown in from the outside and the moisture created from the inside of building through the gap to prevent corrosion of the building
- Saves energy of the building through increased thermal insulation effect
- Reducing external noise
- Prevents dew condensation on the building structure.



- Undercut anchor and cladding fixing

