

## Design Flexibility

Staron<sup>®</sup> can be molded and formed into almost any shape or configuration, which make it easy for designers to create public facilities, hospital areas, and other applications that must comply with ADA requirements as stated in the Americans with Disabilities Act of 1990.

## ADA-compliant vanity bowls

Staron<sup>®</sup> offers vanity bowls that can be fabricated and installed to accommodate accessibility guidelines for the impaired and disabled. The Americans with Disabilities Act (ADA) and the section from ANSI A117.1 provides details, dimensions and specifications to help designers develop their plans so that the facility will provide unobstructed entry and ease of use to all users with disabilities. In all cases, it is the installer's responsibility to design an installation to meet ADA requirements whenever such requirement is specified. The following information is an excerpt from the ADA Standards for Accessible Design. For more detailed information, please visit the ADA Home Page at [www.usdoj.gov/crt/ada](http://www.usdoj.gov/crt/ada).

## Technical specification from ADA Standards

### 4.19 Lavatories and Mirrors:

**Height and Clearances** - Lavatories shall be mounted with the rim or counter surface no higher than 34" (865 mm) above the finish floor. Provide a clearance of at least 29" (735 mm) above the finish floor to the bottom of the apron. Knee and toe clearance shall comply with Fig. 31.

**Exposed Pipes and Surfaces** - Hot water and drain pipes under lavatories shall be insulated or otherwise configured to protect against contact. There shall be no sharp or abrasive surface under lavatories.

**Note:**

**Knee Clearance** - At least 27 in (685mm) high, 30 in (762 mm) wide, and 19 or 22 in (483 or 559 mm) deep shall be provided underneath lavatories.

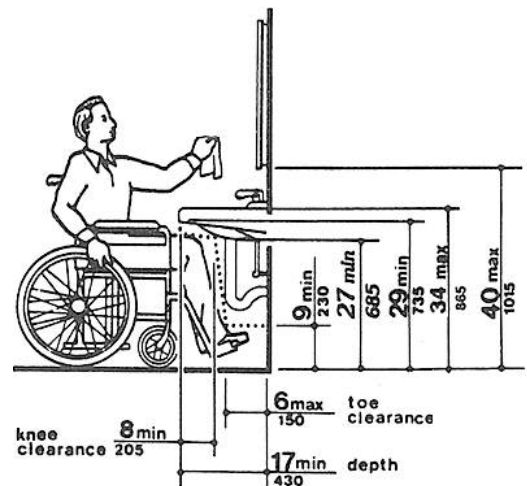


Fig. 31  
Lavatory Clearances

*This Technical Bulletin is intended to provide guidelines for optimal fabrication, installation, and performance of Lotte Chemical Corp. products mentioned. Though the information contained herein is deemed reliable, none of the contents--including but not limited to the instructions, techniques, graphics, and recommendations--is to be understood as implying legal liability of fitness for a specific purpose, any other type of warranty, or being complete or absolute in its range and nature of information.*

*Depending on the user's particular application, all necessary measures must be taken to verify and test the adequacy for such needs or application. Any information or recommendation herein is strictly for purposes of reference and as such, Lotte Chemical Corp. assumes no responsibility for its suitability or accuracy or the use of such information for products other than Lotte Chemical Corp. Staron<sup>®</sup> solid surfaces & Radianz<sup>®</sup> quartz surfaces.*